



THE OPPENHEIMER MOMENT of AI:  
Applying AI to Overcome Global Challenges



# Table of contents

The Oppenheimer Moment	01
The Missing Link	02
Strategic Hybrid Leadership	03
Communicative Hybrid Leadership	04
The Hybrid Leadership	05
The Solution – The Virtual Human in The Virtual Lab	06
The Key: Transferring Innovations	07
Takeaway	08
The AI-Mind Project Overview	09
Leadership Program – The Patron	10

# The Oppenheimer Moment in AI: The Hybrid – Merging Technology with Group-Based Statistics and Human Hypothesis-Driven Knowledge

01

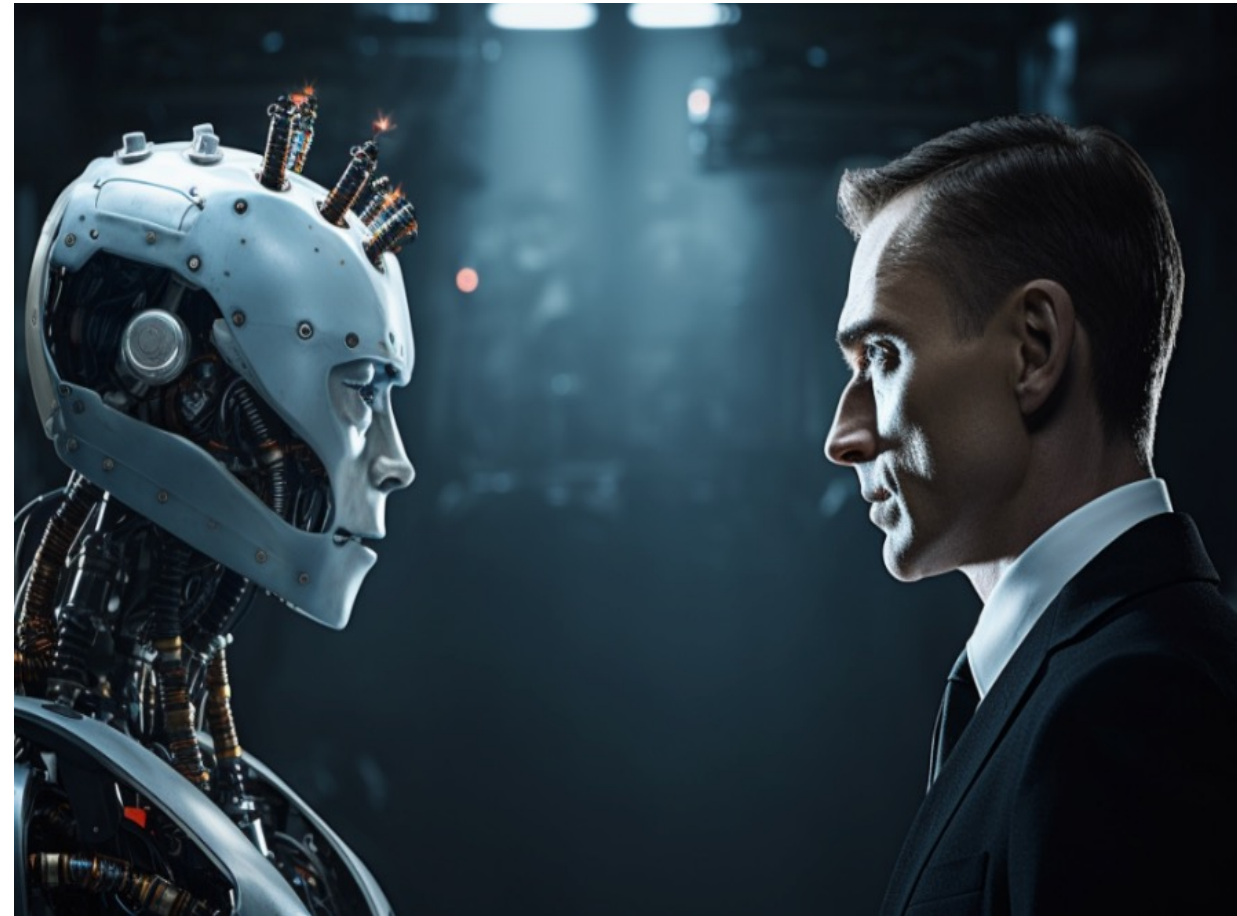
## The Missing Link – Hybrids for Personalized Decision Making

- The Fusion of AI and Simulation Technologies
- Strategic Hybrid Leadership Leadership
- Communicative Hybrid Leadership
- The Hybrid Leadership: The Value of Human Insight in a Data-Driven World

02

## The Solution – the Virtual Human in the Virtual Lab

- Public- Private Interdisciplinary Collaboration
- Takeaway
- Leadership Program Needs
- The Available Infrastructure - Example







# The Missing Link – The Hybrid for Personalized Decision Making



## Integrating AI and Simulation Technologies:

### From Individual to Group Dynamics: Risk Analysis Evolution

- How the *Brain Economy* drives individual risk analysis vs. group-based analytics.

### Neuroscience Inspiration: Cognitive Flexibility

- Enhancing innovation and problem-solving through cognitive flexibility.

### The Rise of Proactive Networked Teams

- Moving beyond traditional hierarchies to embrace networked team structures.

### AI Integration and Workflow Transformation

- Balancing automation with human creativity.

### The Shift from Hardware to Software-Driven Industries

- Emphasizing the role of software and data in modern industries.



**Footer: The AI-Mind team at the 2024 General Assembly at the NEMO Museum in Amsterdam - laying the foundation for future virtual lab technology.**

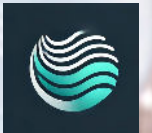
# Strategic Hybrid Leadership – Navigating in the Light, Not in the Dark

## AI Alone Will Not Solve the Challenges, but in Combination with Human Knowledge, It Will:

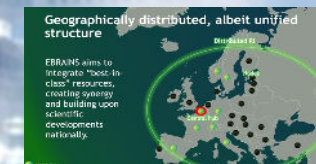
- **Adapting Future Thinking:** Embrace intersectoral, interdisciplinary, and intergenerational approaches for comprehensive solution development.
- **Accelerating Knowledge with Nodes:** Implement node-based, federated systems for faster knowledge sharing and collaboration.
- **Scaling AI-Mind Across Europe:** Initially launched in 8 EU countries, AI-Mind has expanded to 16 European nations, with a strategic focus on global market reach.
- **Addressing Cognitive Impairment:** With 35% of the population over 65 expected to experience mild cognitive impairment, this represents a significant market opportunity.



Funded by  
the European Union



eBRAIN-Health







# Communicative Hybrid Leadership

## AI-Mind Wins at the AIIC-Awards During the XXIV AIIC National Conference

● May 21, 2024  
AI-Mind Wins at the AIIC-Awards During the XXIV AIIC National Conference The third edition of the...

[Read More](#)

### Leaders Must Urgently Translate Complex AI Concepts into Accessible Messages

- **Educating the Public and Policymakers:** It is essential to inform stakeholders about the implications of the hybrids at every level when introducing them.

#### Result:

- **Innovative and Sustainable Solutions:** Human-machine collaboration drives creative responses to major threats.
- **Effective Hybrid Communication:** „Hands-on“ engagement fosters consensus and secures stakeholder buy-in.



**Human Command and Communication Hub:** A new paradigm of human-machine-human interaction that reshapes thinking, production, and living.



# The Hybrid Leadership: The Value of Human Insight in a Data-Driven World

01

**The Hybrids Will Uncover and Address Existing Biases, Making Them Visible.**

- They address complexity and support global socioeconomic stability.
- Topic: Complexity versus Reductionism.

02

**The Hybrids Identify:**

- Real-world customer needs.
- Transparency, accountability, and fairness.

03

**The Hybrids Foster Trustworthy and Responsible Practices.**

04

**The Hybrids Will Drive Economic Success and Democratize Our World.**



# The Solution – The Virtual Human in The Virtual Lab

## Added Value:


- Individualized and case-based decision making
- Better predictions
- Inter-sectorial dependency identification and wise predictive criticality analysis
- Less conflicts and failure
- Higher satisfaction
- A promising healthy ecosystem

**It allows for cross-border collaboration, making innovation more accessible, and drives cost savings and economic growth through scalable, risk-free testing and development.**

The New York Times

[Covid-19 Guidance >](#) | [Can I Still Use Expired Tests?](#) | [New Covid Shot Questions](#) | [Symptoms and Treatment](#) | [Free Tests Are Back](#)

ADVERTISEMENT



3rd party ad content

## The evolution of AI in clinical

How generative AI is shaping the future of clinical

[READ MORE](#)

## This Should Be V.R.'s Moment. Why Is It Still So Niche?

Virtual escapism is perfect for a pandemic, but V.R. still seems far from a mainstream technology.

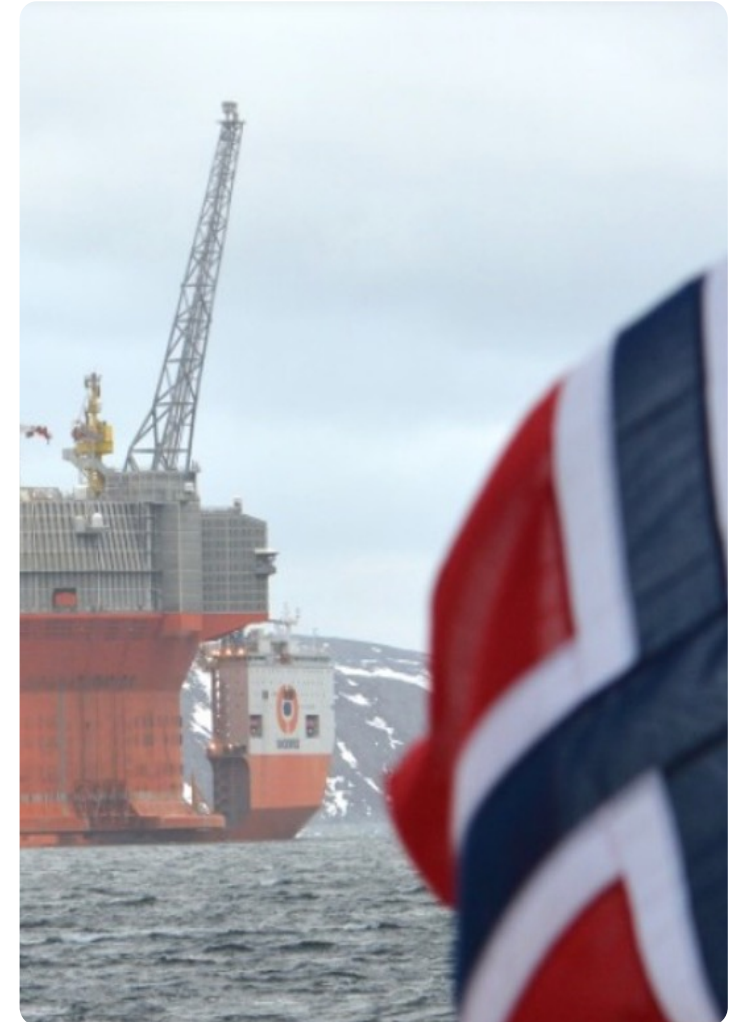
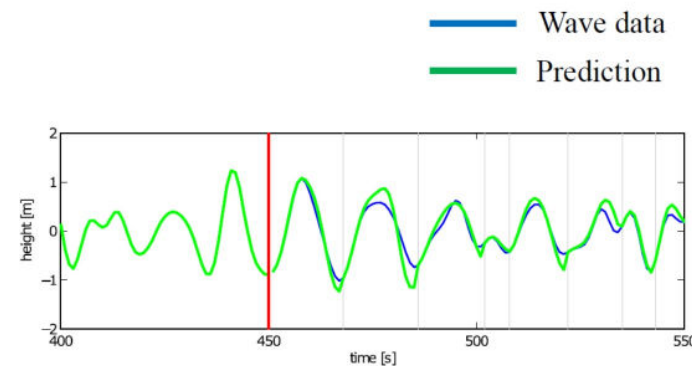
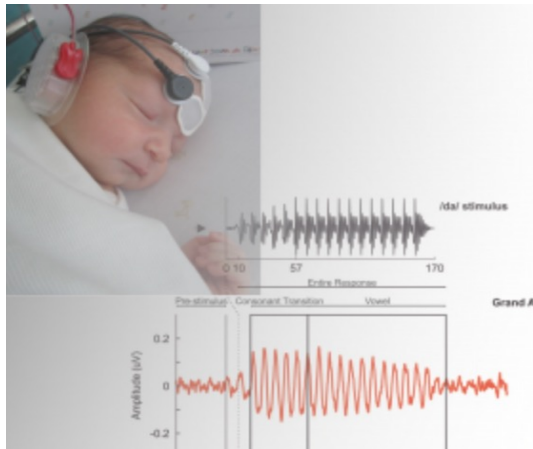


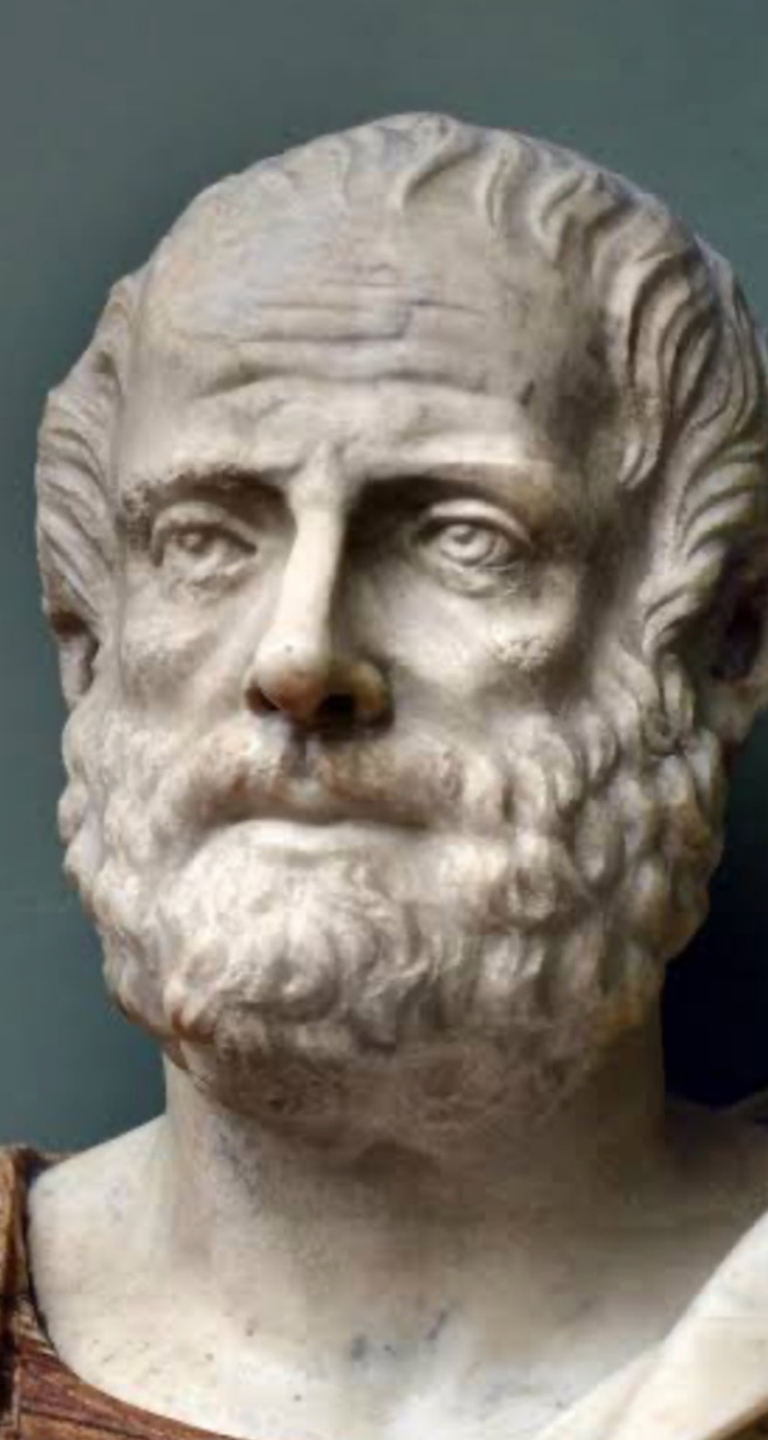
# The Key: Transferring Innovations to Implementation in Public-Private Collaborations

**Initially Designed for Precision Medicine**, this technology now adapts across sectors such as energy, manufacturing, and logistics.

**By Predicting Complex Patterns**, it enhances safety, efficiency, and cost-effectiveness, opening new opportunities for smarter, streamlined operations across various industries.

- Leveraging interdisciplinary expertise for innovative solutions.
- Integrating intergenerational knowledge to ensure sustainable growth.
- Harnessing complex insights for interconnected global development.
- Driving innovation for a more sustainable, connected world.





## Takeaway

### 01 Communicating the Urgency of Change for Europe

- Closing the development gap and catching up with the US and China.
- Economic restructuring.
- Demand for "hands-on" expertise in AI, simulation, and data management.
- Leadership built on adaptability, inclusiveness, and interdisciplinary communication.
- Embracing strategic thinking inspired by Greek and Roman philosophy: Practical wisdom, phronesis, and stoicism are vital for hybrid leaders.

### 02 Responsible Transition – Preparing for the Future with Hybrid Leadership:

- 21st Century Leadership: Navigating AI, simulation, and data management in virtual interdisciplinary labs.

# The AI-Mind Project Overview on The TSD server (SSD)

Principal Investigator: Dr. Ira Haraldsen

## The AI-Mind Project Overview

5 Petabytes of data managed

1 Terabyte moved in and out per day

Largest health project on TSD

TSD Norway: In production for 8 years

## User and Project Statistics

8000 users and 2000 projects

10 new projects per week in 2022

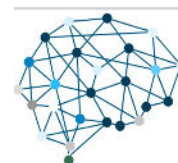
## Operational Scale

50 institutions involved

4000 virtual machines

## Support and Staffing

Supported by 14 full-time employees



## AI-Mind key facts



### Duration

5 years  
Kick-off March 2021



### Budget

14 million €



### Collaborations

HP Human Brain Project

EBRAINS

HDC  
EBRAINS Services for Sensitive Data



### Outreach

[www.ai-mind.eu](http://www.ai-mind.eu)



8 countries 18 partners\*





# Leadership Program – The Patron – Dr. Ira Haraldsen

## 01 Introduction

- The new certificate program is supported by the Distinguished Patron, Ira Haraldsen MD, PhD, emphasizing Hybrid and Data Management automation as key components for the leaders of tomorrow.

## 02 About the Patron

- Specialist in Neurology, Psychiatry, Clinical Neuroscience and Innovation.
- Expert in AI-driven hybrid algorithm development and critical decision-making development.
- Established public-private partnerships with (Roche Pharma and Diagnostics, Eisai, Bioartec, Eli Lilly, Microsoft).
- International high impact speaker and writer.

## 03 Leadership

- Committed to winning sustainable technological innovations and ensuring financial stability.
- Essential leadership adaptations and focal points in the AI era.
- Emphasizing vision, urgency, and motivation.
- Ethical diversity.
- Adaptive – the change.
- **Extensive leadership experience in navigating critical organizational transitions, including crisis management.**

## 04 Leading a 45 Million € Research and Innovation Portfolio



# Thank you so much!

## The Oppenheimer Moment in AI: The Hybrid – Merging Technology with Group-Based Statistics and Human Hypothesis-Driven Knowledge

It will be a pleasure to contribute as the patron to the exciting new leadership program, *Leadership in the 21st Century*, led by **Dr. Mona Haug at DHGS, Berlin**, and to engage in idea sharing.

Thank you to **Grethe Bøe, Oslo**, author and film director, for the *Mayday* book cover image.

Thank you to **Professor Dr. Ole Petter Ottersen**, Professor University of Oslo and Visiting Professor Charité, for your insights.

**Contact: Ira Haraldsen**  
**Coordinator, PI, AI-Mind.EU**  
**[contact@ai-mind.eu](mailto:contact@ai-mind.eu)**  
**phone: +47 920 11 5 33**



## AI-Mind joins Strategic Workshop on Multimodal Health Data Integration October 8, 2024

AI-Mind Joined Strategic Workshop on Multimodal Health Data Integration On 23 September, AI-Mind participated in

[Read »](#)